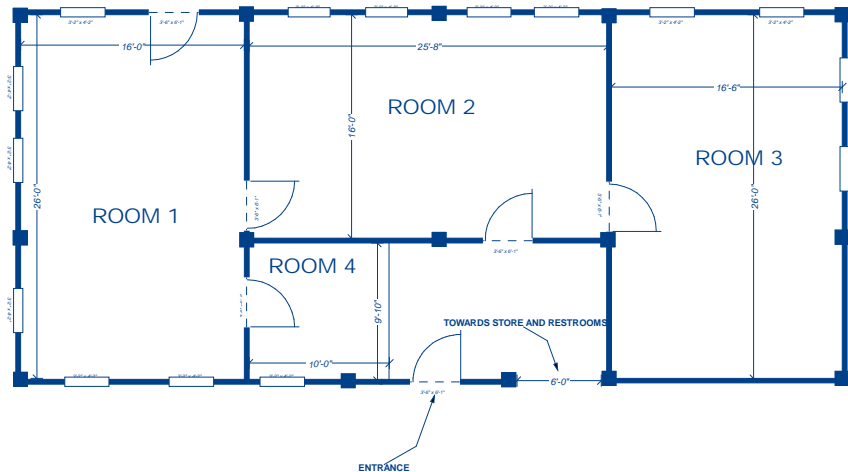


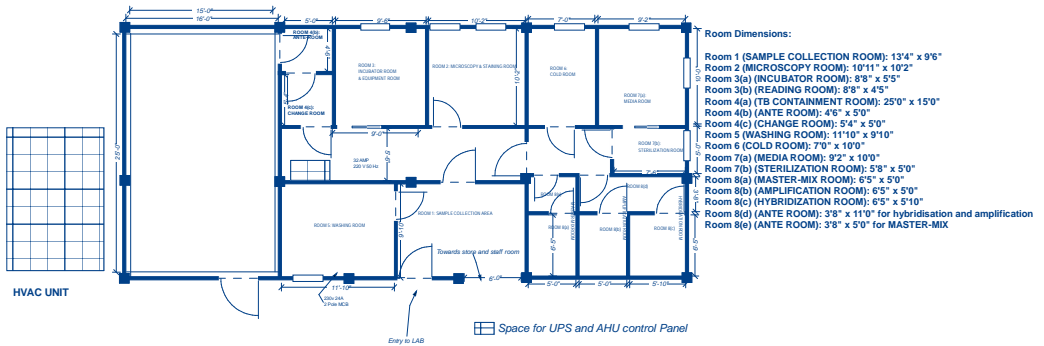
Existing Layout Shillong Reid Provincial TB Hospital, Shillong, Meghalaya

Annexure 1

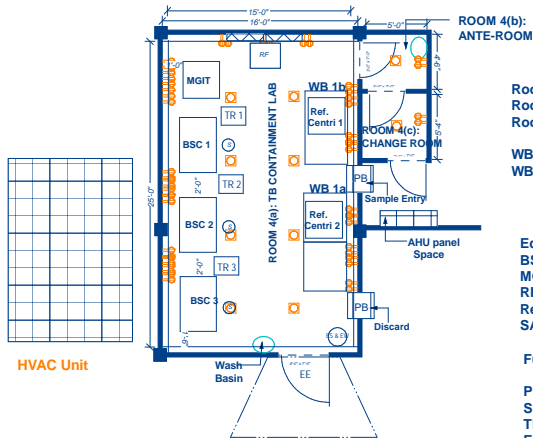


Proposed Layout denoting space for C&DST Lab Reid Provincial TB Hospital, Shillong, Meghalaya

Annexure 2(a)



Proposed TB containment Lab Reid Provincial TB Hospital, Shillong, Meghalaya



Additional work related to TB Containment Lab:

- 1) Creation of Door as indicated in the layout
- 2) Creation of Passbox as indicated in the layout
- 3) Creation of HVAC/AHU platform with a height 2 feet above the ground level
- 4) Creation of RAMP Pathway for the Emergency Exit. Shown indicated as: " ——— " "

Room 4(a) (TB CONTAINMENT ROOM): 25'0" x 15'0"

Room 4(b) (ANTE ROOM): 4'6" x 5'0"

Room 4(c) (CHANGE ROOM): 5'4" x 5'0"

WB 1(a): Work Bench (LxWxH) (8' x 3'6" x 3'): TB Containment lab

WB 1(b): Work Bench (LxWxH) (6' x 3'6" x 3'): TB Containment lab

Equipment Details

- BSC: Bio-safety Cabinet (3 Nos)
- MGIT: MGIT 960 (1 nos)
- RF: Refrigerator (1 nos)
- Ref. Cent: Refrigerator Centrifuge (2 nos)
- SA: Split AC 2TR (2 nos)

Furniture and others:

- PB: Pass-Box (2' x 2') (2 nos)
- S: Revolving Stools (5 nos)
- TR: Trolley (2' x 1'6") (2 nos)
- ES & EW: Emergency shower and Eye Wash
- SC: Storage Cabinet
- SR: Shoe Rack
- EE: Emergency Exit